

# EKO1250

## CHECK BUTTERFLY VALVE (TURBINE INLET VALVE)

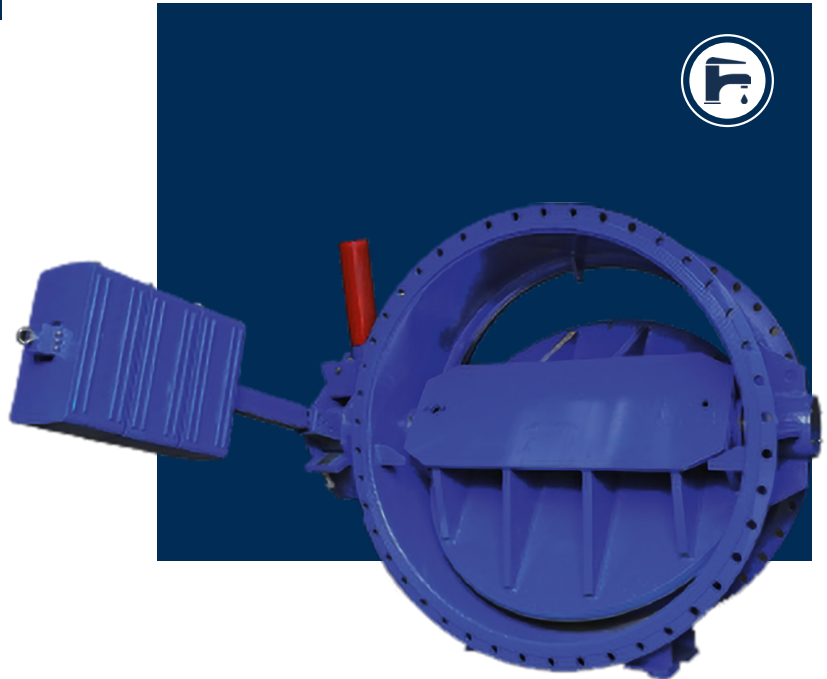


### TECHNICAL ADVANTAGES

- Turbine Inlet Valve widely used in Hydroelectric Power Plants
- Emergency Shut off Valves in Dams and Reservoirs
- Valve design according to BS EN 593 Double Eccentric Design standard
- Valve Shaft Double Offset
- Face to face length according to EN 558-1 Series 13 (Short) or EN 558-1 Series 14 (Long)
- Flanged connection according to DIN2501, EN 1092-2 or ISO 7005-2
- Hydraulic Pressure test according to EN 12266-1
- Wear Resistant Resilient EPDM or NBR Disc Sealing
- Maintenance Free Bronze Shaft Bearings
- Can be supplied with Bidirectional Design
- EKO1250 Check Butterfly Valves can be used as Control Valves and for Regulation Purpose
- Max Application Temperature +70°C
- EKO1250 Check Butterfly Valves can be used as Control Valves and for Regulation Purpose
- Suitable for Electric and Pneumatic Actuator Connection for On-Off and Regulating Purpose
- WRAS Approved Model Suitable for Potable Water
- Double Eccentric Valves are Two Direction Seat Tight, Please Obey Flow Direction Arrow
- Adjustable and Replaceable Sealing Ring
- EN12516-1 Steel Welded Design (Optional)
- High Security Coefficient

### MATERIAL

- Body: GGG40/50 Ductile Iron
- Disc: GGG40/50 Ductile Iron
- Body Sealing Surface: Corrosion Resistant Stainless Welded AISI 316
- Retaining Ring: Ductile Iron, Steel, Stainless Steel  
Disc Sealing: EPDM, NBR
- Bolts: Galvanized, Stainless Steel
- Shaft: SS420, SS304, SS316, Duplex
- Bearing: Bronze
- O ring: EPDM, NBR
- Cover: GGG40/50 Ductile Iron
- Gear Box: GGG40/50 Ductile Iron
- Seat: SS316 Welded



### COATING

- Inside and Outside 250 to 350 Microns Fusion Bounded Powder Epoxy Coated RAL 5005
- Zinch-Rich Epoxy Primer
- Coal-Tar Epoxy
- Glass Flake Epoxy
- Completely Stainless Steel Design is Optional

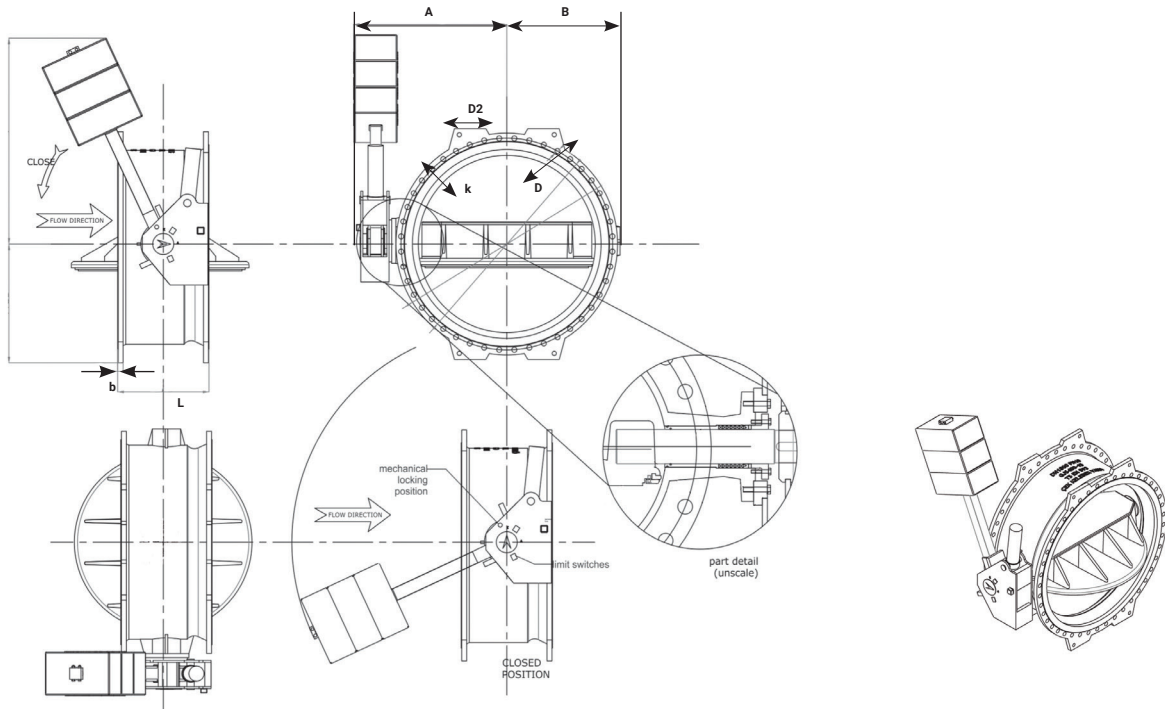
### VERSIONS

- Mechanical Position indicator and Limit Stops on Gearbox
- Can be supplied with Gearbox ( IP-65 rated, IP-67 or IP-68 )
- With Electric Actuator
- With Hydraulic Piston
- With Counter Weight
- Additional Limit Switch for Hydraulic Leakages
- Electric actuator ready
- Pneumatic Actuator
- Fixed & Telescopic Extension Spindle

Remarks: Grey tones represents available options.

# EKO1250

## CHECK BUTTERFLY VALVE (TURBINE INLET VALVE)



PN10	Body			Flanges					Gear Box			Weight (kg)
DN	A (mm)	B (mm)	L (mm)	D (mm)	K (mm)	d2 (mm)	b (mm)	No. of Holes	Model	Turn / Strok	Torgue	
150	115	279	210	285	240	23	19	8	DK 60	21	40 Nm	30
200	150	308	230	340	295	23	20	8	DK 60	21	50 Nm	44
250	180	351	250	400	350	23	22	12	DK 85	31	50 Nm	60
300	215	401	270	455	400	23	24,5	12	DK 85	31	80 Nm	81
350	240	411	290	505	460	23	24,5	16	DK 110	23	85 Nm	110
400	261	465	310	565	515	28	24,5	16	DK 110	23	90 Nm	155
450	306	508	330	615	565	28	24,5	20	DK 125	23	90 Nm	190
500	345	339	350	670	620	28	26,5	20	DK 125	23	100 Nm	240
600	392	625	390	780	725	31	30	20	DK 125	23	105 Nm	320
700	462	722	430	895	840	31	32,5	24	DK 160/3	70	95 Nm	470
800	512	772	470	1015	950	34	35	24	DK 160/3	70	100 Nm	620
900	576	880	510	1115	1050	34	37,5	28	DK 160/3	70	105 Nm	800
1000	642	900	550	1230	1160	37	40	28	DK 200/9	225	95 Nm	1050
1100	692	968	590	1340	1270	37	40	32	DK 200/9	225	200	1390
1200	763	1104	630	1455	1380	40	45	32	DK 200/9	225	105 Nm	1740
1300	830	1235	670	1570	1490	43	45	32	DK 370/9	262	175 Nm	2260
1400	880	1285	710	1675	1590	43	46	36	DK 370/9	262	200 Nm	2545
1500	970	1290	750	1785	1700	43	46	36	-	-	-	-
1600	995	1386	790	1915	1820	49	49	40	-	-	-	-
1800	1140	1460	870	2115	2020	49	52	44	-	-	-	-

Remarks: For empty sections, please contact with EKOVAL for empty sections.

# EKO1250

## CHECK BUTTERFLY VALVE (TURBINE INLET VALVE)



PN16	Body			Flanges					Gear Box			Weight (kg)
	DN	A (mm)	B (mm)	L (mm)	D (mm)	K (mm)	d2 (mm)	b (mm)	No. of Holes	Model	Turn / Strok	
150	115	279	210	285	240	23	19	8	DK 60	21	-	30
200	150	308	230	340	295	23	20	12	DK 60	21	-	44
250	180	351	250	400	355	28	22	12	DK 85	31	-	60
300	215	401	270	455	410	28	24,5	12	DK 85	31	-	85
350	240	440	290	520	470	28	26,5	16	DK 110	23	-	116
400	275	463	310	580	525	31	28	16	DK 125	23	-	115
450	306	508	330	640	585	31	28	20	DK 125	23	-	237
500	357	583	350	715	650	34	31,5	20	DK 125	23	-	300
600	413	673	390	840	770	37	36	20	DK 160/3	69	-	460
700	470	736	430	910	840	37	39,5	24	DK 160/9	207	-	670
800	537	822	470	1025	950	40	43	24	DK 200/3	75	-	775
900	615	935	510	1115	1050	40	46,5	28	DK 200/3	75	-	970
1000	666	985	550	1255	1170	43	50	28	DK 200/9	225	-	1320
1200	784	1154	630	1485	1390	49	57	32	DK 370/9	262	-	2090
1400	915	1235	710	1685	1590	49	60	36	DK 370/9	262	-	2945
1500	1000	1315	750	1820	1710	56	60	36	-	-	-	-
1600	1045	1415	790	1930	1820	56	65	40	-	-	-	-
1800	1170	1725	7870	2130	2020	56	70	44	-	-	-	-

PN25	Body			Flanges					Gear Box			Weight (kg)
	DN	A (mm)	B (mm)	L (mm)	D (mm)	K (mm)	d2 (mm)	b (mm)	No. of Holes	Model	Turn / Strok	
150	115	277	210	300	250	28	20	8	DK 85	31	-	31
200	150	308	230	360	310	28	22	12	DK 85	31	-	50
250	180	351	250	425	370	31	24,5	12	DK 110	23	-	67
300	215	419	270	485	430	31	27,5	16	DK 110	23	-	103
350	240	450	290	555	490	34	30	16	DK 125	23	-	133
400	275	485	310	620	550	37	32	16	DK 160	23	-	174
450	312	555	330	670	600	37	34,5	20	DK 160	23	-	280
500	377	636	350	730	660	37	36,5	20	DK 160/3	69	-	380
600	425	679	390	845	770	40	42	20	DK160/9	207	-	490
700	490	755	430	960	875	43	46,5	24	DK 200/9	225	-	760
800	571	894	470	1085	990	49	51	24	DK 200/9	225	-	800
900	612	954	510	1185	1090	49	59,5	28	DK 200/9	225	-	1250
1000	681	1051	550	1320	1210	56	60	28	DK 370/9	262	-	1685
1200	813	1175	630	1530	1420	56	74	32	-	-	-	-
1400	930	1413	710	1755	1640	62	76	36	-	-	-	-
1600	1042	1517	790	1975	1860	62	84	40	-	-	-	-
1800	1194	168	870	2195	2070	70	90	44	-	-	-	-

Remarks: For empty sections, please contact with EKOVAL for empty sections.