

EKO19000

FIXED CONE VALVE

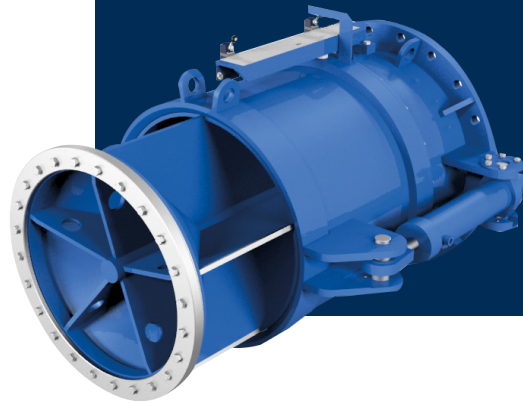


TECHNICAL ADVANTAGES

- Valve Design can be Customised According Project Specifications
- Flange Connections According to EN1092-1
- Complies to DIN 19704, DIN 19705, EN 12516-1
- Closing and Regulating Bottom and intermediate Water Outlets of Dams and Reservoirs
- Releases a Hollow Cone Shaped jet (Fan or Spray Type Jet)
- Bottom Outlet Discharge Valve
- Very High Discharge Capacity
- Light & Simple Design
- No Cavitation-Vibration
- Soft Sealing Between Cylindrical Sleeve And Body
- Stainless Steel Coating on Body Surface
- Low Operation Force

MATERIAL

- Body: WCB, S275JR, AISI304
- Jacket: S275JR, AISI304
- Seat: EPDM
- Sleeve: Stainless Steel
- Screw Type: Aluminium Bronze, Stainless Steel
- Bolts: A4-70 Grade
- Nuts: A4-70 Grade



COATING

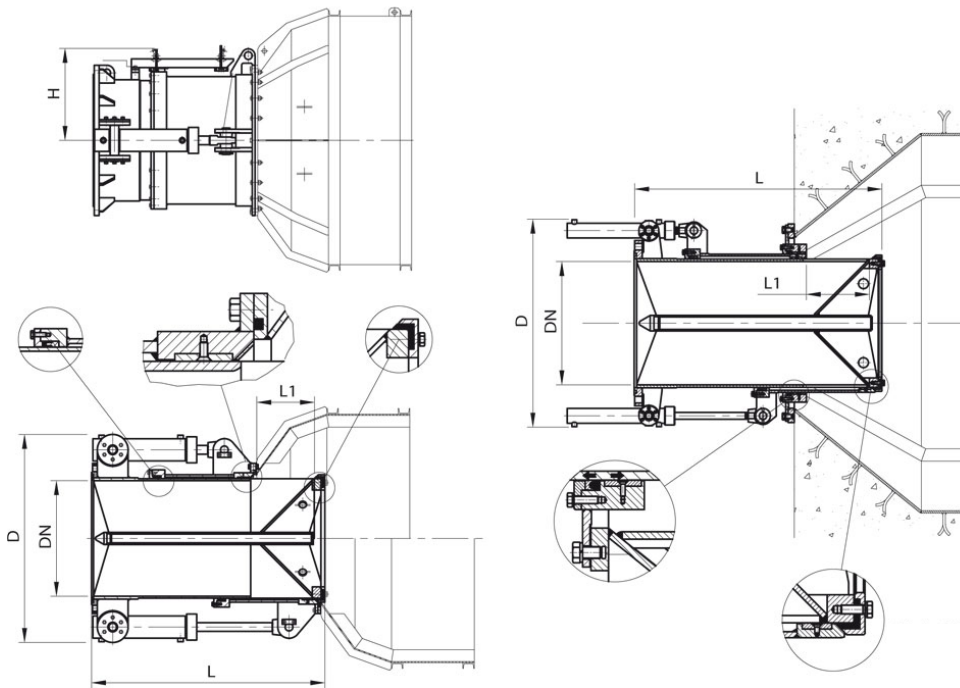
- Epoxy Coating
- Zinc Rich Epoxy Primer
- Cool-Tar Epoxy Coating
- Stainless Steel Coating on Body Surface

VERSIONS

- Please contact for Available Versions

EKO19000

FIXED CONE VALVE



Fixed Cone Valve Dimension Table				
DN	D	L	L1	H
300	655	809	232	288
350	655	809	232	288
400	730	985	220	380
500	860	1065	268	450
600	995	1210	328	475
700	1140	1355	350	525
800	1322	1545	500	580
900	1350	1575	585	650
1000	1390	1870	670	655
1100	1490	1988	675	705
1200	1590	1925	680	755
1400	1872	2080	715	955
1500	2165	2235	750	1150
1600	2265	2560	900	1150
1800	2465	3060	1050	1250
2000	2715	3500	1150	1390